



## St. Peter's United Methodist Church

17222 NE 8th Street, Bellevue, Washington 98008

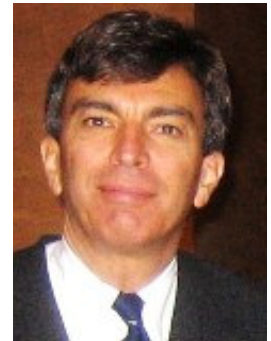
*Near the Crossroads where North meets South and East meets West*

Volume 33, No. 11 November 2011

### *Devotional Thought for November*

Benjamin Franklin supposedly believed that there are two ways to find happiness: "We may either diminish our wants or augment our means, either will do... But if you are very wise, you will do both in such a way as to augment the general happiness of society."

I don't know exactly what he meant by the general happiness of society, but as one who tries to follow the Christ with a Wesleyan spirit, my desire is that all people will one day experience a deep sense of well-being and the joyful reality of God's *shalom*. If diminishing my wants and augmenting my means will help, in some small way, to bring about God's *shalom* at the Crossroads, well, I am praying that the Spirit will guide me in doing both with greater seriousness. I am sure that there are things that I want that I probably don't need, for example, a daily Americano at Starbucks. I enjoy the routine, and I look forward to saying "Hello" to the baristas and being greeted by name. And yet, quite frankly, I suspect I could increase my contribution to St. Peter's by \$300 by simply having tea at the church most days. Might this be one small step to help bring about God's *shalom*? I invite you to pray for me as I discern how I can diminish my wants and augment my contributions for the benefit of others. Under the direction of the Spirit, both efforts become acts of Christian discipleship and faithfulness.



The days of our annual stewardship campaign are upon us. For a second year in a row, Roger and Reva Alington have given superb leadership in organizing the campaign, in close cooperation with the Finance Committee, under the capable leadership of Wayne and Dianne Lambert. If you are a regular reader of *The Keys*, you have benefited from various articles in previous newsletters, describing in detail what it takes to underwrite the mission and ministries of our beloved church. Information concerning the proposed budget for 2012 will be shared in future newsletter articles and in Stewardship Moments offered in worship services. It is my prayer that you will be inspired to generously support the work of serving the Christ in the lives of those who live near the Crossroads, where north meets south and east meets west.

I believe God is inviting us to stride into 2012 with a sense of adventure. A number of our talented members have agreed to step into new leadership roles, and all of our current leaders and committee members serve with vitality and a willingness to go the extra mile whenever we are addressing important issues and real needs. May God continue to bless and equip us for effective service.

Until next month,  
Tom

## Lay Leader Commentary

by Dick Clark



As I write, this I can look out my window where a new fitness center is being constructed. When the morning began there was a stand of eight fir trees – at least as tall as our three story building – that framed the view. Just below the trees was a car port large enough to shelter a half dozen cars.

This morning workers in hard hats used their chain saws to demolish the trees. Quickly a large machine mashed up the downed trees and loaded them on large white trucks that hauled them away. Next, the same machines demolished the car port. Nothing remains of that structure but a few posts and a small pile of roofing and two-by-fours that will be hauled away soon. The view I had become accustomed to is gone.

The old view is gone but a new one has appeared. Now there is a wide picture of the Cascade Mountain range – a view of peaks that promise to be spectacularly snow covered, glistening behind fog shadowed valleys, as winter arrives.

As the day has progressed, I have been reminded again of how often we worry about things we may lose without anticipating the new opportunities that may replace them.

As we at St. Peter's continue our quest to bring people to a personal relationship with God through Christ and to be empowered by the Holy Spirit to minister to the world, we may discover that sometimes we will experience a jarring loss of old ways, but if we persist we will find that there will be new and wonderful opportunities for all. Let us all keep our eyes on the new vistas God is calling us to view.

### The M&M's Corner By Roger Allington

A fifth grade teacher in a Christian school asked her class to look at TV commercials and see if they could use them in ways to communicate ideas about God. Here are some of the results: **DELTA**— He's ready when you are. **ALL-STATE**— You're in good hands with Him. **VO-5 HAIR SPRAY**— He holds through all kinds of weather. **DIAL SOAP**— Aren't you glad you have Him? Don't you wish everyone did? **The U.S. POST OFFICE**— Neither rain, nor snow, nor sleet nor ice will keep Him from His appointed destination. **CHEVROLET**— the heartbeat of America. **MAXWELL HOUSE COFFEE**— Good to the very last drop. **BOUNTY**— He is the quicker picker upper; can handle the tough jobs and He won't fall apart on you.

Well, after Oct. 6th, 22 M&M's could say that God is like: **THE OLIVE GARDEN**— He always provides abundance! **On November 3rd, M&M's will gather at Mizu Japanese Steak House** (339 Strander Blvd. in Tukwila). This is a *tepanyaki* restaurant where guests sit around the outside of a large grill and watch showmen-chefs prepare the food. If you've never been to a *tepanyaki* or *hibachi* steakhouse, this is the time to visit with M&M's. Twenty-one M&M's went to Mizu in March, 2010 and there have been numerous requests to have a repeat performance.

Our reservation is for 11:45 a.m. and it is a 30-minute trip from St. Peter's to Tukwila. We suggest that rideshare people leave the church at 11:00 to compensate for traffic. Please contact **Reva** or **Roger Allington** at 425-373-1370 or [rogerallington@yahoo.com](mailto:rogerallington@yahoo.com) for more information, establishing a head-count and arrange ride sharing if necessary. This will be a FUN event and all are invited.

## What Does it Mean to Tithe?

By Roger Allington, Stewardship Chair

**Leighton Farrell** was the minister of Highland Park Church in Dallas for many years. He tells of a man in the church who once made a covenant with a former pastor to tithe ten percent of their income every year. They were both young and neither of them had much money. But things changed.

The layman tithed one thousand dollars the year he earned ten thousand, ten thousand dollars the year he earned one-hundred thousand, and one-hundred thousand dollars the year he earned one million. But the year he earned six million dollars he just could not bring himself to write out that check for six-hundred thousand dollars to the Church. He telephoned the minister, long since having moved to another church, and asked to see him.

Walking into the pastor's office the man begged to be let out of the covenant, saying, "This tithing business has to stop. It was fine when my tithe was one thousand dollars, but I just cannot afford six-hundred thousand dollars. You've got to do something, Reverend!" The pastor knelt on the floor and prayed silently for a long time. Eventually the man said, "What are you doing? Are you praying that God will let me out of the covenant to tithe?" "No," said the minister. "I am praying for God to reduce your income back to the level where one thousand dollars will be your tithe!" (by **Brian Kluth**.)



While the Hebrew word "*ma' aser*" is translated as "tenth" it can just mean a "portion". Leviticus 27:30-32 says:

<sup>30</sup> "A tithe of everything from the land, whether grain from the soil or fruit from the trees, belongs to the LORD; it is holy to the LORD.

<sup>31</sup> Whoever would redeem any of their tithe must add a fifth of the value to it. <sup>32</sup> Every tithe of the herd and flock—every tenth animal that passes under the shepherd's rod—will be holy to the LORD.

The Mosaic law requires a tithe of 10% of one's **assets**; crops, money, land, etc. In the Hebrew culture of that time, a good part of the tithe was used to run the government, a theocracy. In today's culture, particularly in the United States, the governments collect taxes to do much of what was done through tithes by the Hebrews. The modern interpretation of the tithe as 10% of one's **income** to support the church seems applicable. Therefore, most churches ask for 10% tithes from their members.

More important is the admonition to have a "tithe" or "dedicated amount" to give to support St. Peter's. We ask all to make this pledge to give a portion of their incomes to God through St. Peter's. Jesus never asked for a tithe of His disciples; essentially He promoted that all belongs to God. We are asked to give back to God in proportion to what we as individuals receive from God in our blessings.

**Every Member Makes a Pledge Every Year!**

## Celebration Lunch features Ethnic Food & Entertainment!

On Sunday, Nov. 20th, the Pledge Cards will be consecrated to God during the 10:30 a.m. worship service. Immediately following worship, we will all move into the Fellowship Hall to attend a Celebration Potluck lunch and program, featuring the ever-popular and entertaining "**Don Duncan** Not-Ready-for-Prime-Time Players." To add to this special occasion, we are asking everyone to bring a dish to share that speaks of your ethnic heritage. Swedish meatballs? Lasagna? Pot stickers? Refried beans? Jell-O?

No need for reservations! Everyone who shows up is welcome!



## Holiday Gala Supports Our Music Program

Come get into the holiday spirit at a gala musical dinner fundraiser. Kick off the Christmas season on Saturday, December 10th at 6 p.m. in the Fellowship Hall. Enjoy a gourmet dinner and musical entertainment provided by our Chancel Choir, Carillons and featured soloists. Participate in a Christmas carol sing-along...all while supporting the musical programs at St. Peter's.

Tickets will go on sale soon. Cost: \$20 (\$10 is tax deductible). Invite your friends and family for this special holiday event. Questions? Contact **Sue Cullor** at (425) 746-0994.

## Please Feed the Sox Box!

For several years, members of St. Peter's have been helping serve breakfast at Seattle First UMC to homeless people. More than 300 are served on Sunday



mornings and in the winter these people are delighted to get in from the cold and wet. One winter morning a woman reported to **Terry Patrick** that someone had stolen her socks so Terry took off her own socks and gave them to the woman saying, "I have more at home."

Starting in November, members of St. Peter's, including our youth under the leadership of **Jennifer Wood** and **Scott Callihan**, will be collecting socks to distribute on December 25<sup>th</sup> when St. Peter's helps with the Breakfast for the Homeless at Seattle First UMC on Christmas morning. The youth and congregation of Snoqualmie UMC will be joining in this project as well.

All types of socks are welcome. We hear that Costco has heavy wool socks at 3 pairs for \$10 and that Goodwill has new socks at \$2 per pair. Fred Meyer generally has socks at half price on the day after Thanksgiving but that may be in the morning only. See what you can find. We are trying to accumulate 350 pairs of socks. Even good condition, used socks would be helpful – did you buy too many pairs of socks last time or have some socks you didn't wear because you don't like the color? There is a box in the church office to accept donations of socks. Most of the clients are men but there are a few women and small men who could use small to medium sized socks.

The list is still open for volunteers to help serve breakfast to the homeless on December 25<sup>th</sup>. Call **Pat King** at 425-396-5141 to sign up.

## Give a Gift...Give a Card

Simplify your gift giving this holiday season by ordering a Safeway gift card. Available in different denominations, Safeway cards may be used for groceries, gas, or exchanged for a wide variety of cards for restaurants, department and specialty stores or entertainment venues.

Order forms are in the Oct. 30th, Nov. 6th, Nov. 27th and Dec. 4th bulletins. Once ordered, they will be handed out on Nov. 13th and Dec. 11th. See **Sue Cullor** for more details.

## You Deserve a Pat on the Back!

The Finance Committee reports that due to the congregations positive response to our previous requests to keep pledges current, we are now 'ahead of the game!'



Our YTD Pledged Amount is \$132,630. Our YTD Pledged Received is \$132,689. This puts us \$59 in the green! Great job and keep up the good work!

## Eastside Winter Emergency Shelter Sends Out An SOS

By Pat King, Mission Outreach Chair

St. Peter's was recently contacted by the directors of The Sophia Way, Congregations for the Homeless, and a representative of the City of Redmond regarding a facility to shelter homeless men for up to four months of this year's winter season. Upon the recommendation of our Trustees and the Mission and Outreach ministry group, the Church Council voted to endorse and approve a motion to house the men at our church. There is still much to be done, including building inspections and permits by the City of Bellevue and the Bellevue Fire Department. Pending the approvals, fundraising, and adequate preparation, the plan is to provide a winter shelter from November 15 through March 15, 2012.

When the shelter opens, St. Peter's will be provided \$1,500 per month to mitigate extra costs of utilities and the general wear and tear of the building and equipment. The hours of the shelter will be 8:30 pm to 7:30 am for the men, with staff arriving a half hour before and leaving an hour later to be sure that a thorough cleaning has been completed. Other churches and organizations will bring in a dinner for the men, and the program provides a light breakfast. Initially, the program may begin with 15 to 20 men, growing to 35 to 40 men in January or February, with a limit set at 50. The men will sleep in our Fellowship Hall and will be confined to that area, using only the upstairs bathrooms.

Church meetings and outside groups using church facilities later than 8:30 pm will have access to the Sanctuary, Library, Pastor's study, Bride's Room, Prayer Room, etc., during which time use of bathrooms will be confined to those in the north and south basements (not the ones next to the kitchen). A liaison committee will be formed to communicate with the director of the Eastside Winter Shelter on a weekly basis. In the case of special events such as the choir fundraiser dinner or our Christmas Eve service, the shelter will open at a later time. The director, **David Johns Bowling**, through his work with Congregations for the Homeless, is experienced with all types of issues in dealing with shelters hosted in churches and will do everything in his power to find a way to resolve scheduling issues and other concerns.

This is an opportunity for our church to realize our vision of "continuing and expanding our outreach to the homeless and hungry." Questions may be directed to **Pat King**, Chairperson of Mission and Outreach Ministry Group; **Dick Clark**, Lay Leader, or **Shirley Lumry**, a member of the Board of Trustees.



## 2012 Prayer Calendars Available from the Office

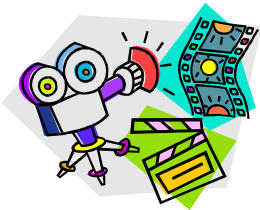
The office has ordered 25, 2012 spiral bound Prayer Calendars and is offering them for sale. They are 9x7.5" and include daily lectionary readings, lists of prayer focus, images, prayers and stories to inspire, as well as generous daily space to write appointments and reminders. The calendars are produced by the Global United Methodist Women and, in addition to personal use, would make a lovely gift. Cost is \$10 each. Make your check out to St. Peter's with "Prayer Calendar" in the memo section. Calendars are located on the credenza in the office.

# St. Peter's Children & Youth

## NEWS & EVENTS:



### Lights! Camera! Action!



We are doing youth skits again this year for the Youth Services Sunday on December (11<sup>th</sup>). We have three short plays with a great message written by a fellow youth and we plan on filming during Youth Sunday Studies and during Youth Matters meetings. There are plenty of opportunities to participate: acting, filming, and editing. This should be a lot of fun! Be sure and bring your smiles and laughter....as we love those "bloopers"!

We are also looking for musicians or singers to help us keep the music alive. There will be a sign up sheet for ushers, liturgists and the acolytes. Let's get ready to take over a Sunday!!!

### Warm Some Tootsies on Christmas Morning!

The youth are decorating signs to hang about the church to help with the sock drive for our team from St. Peter's serving breakfast for the Homeless at Seattle First UMC on Christmas morning. The youth are encouraged to sign up and help feed the homeless too. Just let Jennifer or Scott know if you want to participate!



We are working with another youth group (Snoqualmie UMC) to gather socks to give to every person who is fed that day. Our goal is to raise 500 pairs of socks to distribute on Christmas day. Ways we can help:

**Watch for sales:** With the holidays coming we can help watch for great deals to make it so we can buy more socks with the money raised.

**Spare change:** The youth have a sock (stocking) that they are filling with spare change. Whenever we find a coin or get change from something we have bought we are bringing our change to put in the sock. This is found on the Youth room door in the office. When we are ready we will go on a Tuesday Youth Matters outing to purchase socks as a group.

**Box in Office:** There is a decorated box for donations in the office and we plan to ask others in the congregation to help us gather socks.

News and Events continued on next page.....

# St. Peter's Children & Youth

## NEWS & EVENTS:



Sunday, November 27<sup>th</sup>  
3:30pm to 8:00 pm

Come celebrate the beginning of the holiday season with a fun treat. We have so much in Downtown Bellevue offered we thought we would make a day of it! So we are changing the day so we can spend more time. We will meet at St. Peter's and leave at 4pm and plan to return to St. Peter's by 8:00pm. We thought for a meal we would stop by McDonald's. Here's what we have planned:

*Ice Skating Arena\*Garden d'Lights\*Snowflake Lane*

4:00pm - 5:30pm Skating

5:30pm - 6:00pm McDonald's

6:00pm - 7:00pm Bellevue Botanical Garden-Garden d'Lights

7:00pm - 7:30pm Snowflake Lane

Leave Downtown area to head to St. Peter's

Whew! If we can fit that all in we are guaranteed a good nights rest!



Ice Skating Arena: \$10 includes skate rentals for all ages; \$7 with personal skates

\*Will check schedule when available and update if necessary

Bellevue Botanical Garden-Garden d'Lights: \$5 per person; children 10 and under are free

Snowflake Lane: Free

McDonald's: \$5.00 (unless your child wants a larger meal)

**All ages and all friends are welcome**—If you are in need of a scholarship to help with the cost please contact **Scott** or **Jennifer** at 425-440-8079 or email Jennifer at [JW9049@att.com](mailto:JW9049@att.com) (M-F). This is always kept as private/personal information.

\*\*\*There will be no youth event on the last weekend in December. We plan on celebrating with the Church on Sunday December 11<sup>th</sup> with delicious food and drinks after services. Let's talk about ideas on what we want to serve!

**"Youth Matters" meets each Tuesday from 4-6:30 p.m. and includes dinner.  
Ages: K-12th grade (beyond 12th grade act as helpers to younger children & youth)**

## Around St. Peter's and the Community —Bits and Pieces of This and That

- **Janet Moore** would like to thank everyone for all the phone calls, emails and cards. She still has laryngitis and a lack of energy, but is beginning to feel better and feels she is making gains in recovering her health. She misses everyone and we miss her too!
- **Save the Date!** Agape Breakfast, Saturday, Feb. 11th, 2012.
- **The Browns** would like to share news of home and family. **Howard** and **Irma Brown** have a new address: 6110 64th St. NE Apt. H104, Marysville, WA 98270. (360) 386-8739. Howard turned 91 on Oct. 16th and still enjoys entertaining people on the piano. Granddaughter, **Katherine Crim**, is a graduate of Western and recently found full-time temporary employment in the tech dept. of a computer company.
- **Our thanks to Rose Hart**, for putting her sewing skills into overdrive and making new 'winter' covers for the office air conditioners. We can already feel the difference!
- **On Sunday, Oct. 16th** we acknowledged our recent confirmation class and welcomed them as members of our church family. Each youth was given a poster and "The Message//Remix" (the Bible in contemporary language) by **Eugene H. Peterson**, as well as certificates of membership and keepsake confirmation cards. Please join us in supporting and welcoming **Jia Ling** and **Jia Wen Chan**, **Elijah Olson**, **Natalia** and **Natasha Ng**, and **Nicholas** and **Zachary Ruble**.
- **Coming in Janaury—St. Peter's All Church Conference** in the sanctuary. Monday, January 2nd at 7 p.m. (the DS will meet the SPRC at 6 p.m.) All members of the church are invited to attend. 2011 Annual Reports will be available at the meeting.
- **Help us stay current** by providing the office with any changes in your address, phone or email.

### Happy Birthday!

4	Joyce Anderson Adora Wood
8	Chuck Simonson Carol Jones
11	Bob Armstead
12	Amy Tan Chan
15	Marissa Gaston
16	Danny Peterson
24	Don Jones
26	Natasha Ng



*If we've forgotten your birthday or anniversary, please call the office so we may correct our records. We celebrate birthdays the 3rd Sunday of each month. We hope you'll join us...and we promise not to tell your age!*

### Please Keep in Your Prayers.....

- ♥ **Bob & Colleen Bailey**
- ♥ **Eileen & Janet Kouba**
- ♥ **Margaret Pratt**
- ♥ **Grace Small** (Regional Hospital for Respiratory, 12844 Military Rd. S., Tukwila, WA 98168)
- ♥ Our military personnel, both here & overseas. Our missionary leaders and volunteers, including **Rev. Devi Bhujel** and **Julie Dahl**.

*Please call or email your prayer requests, changes and updates for the Prayer Letter to **Anne Beishline** : [beish@mindspring.com](mailto:beish@mindspring.com).*

New and/or never-used greeting cards and envelopes (matching or not) are gratefully accepted by the church office for use by **Anne Beishline's** Sunshine Outreach and **Betty Vene McConnell's** card making project. Please leave them in the box in the office.



**November 2011**  
**St. Peter's UMC, 17222 NE 8th St, Bellevue, WA 98008**  
**(425) 747-3210 Office Hours: M-F, 9A-12P**  
**Sunday Schedule: 8:30-9A Communion Service—**  
**9-10A discussion Group—10:30A Worship Service**



Sun	Mon	Tue	Wed	Thu	Fri	Sat
<b>Veteran's Day Remembrance:</b> As Winston Churchill said, "Never in the field of human conflict was so much owed by so many to so few." Thank you to all the men and women who served or are now serving our country.		1 9A-12:30P CC  <b>4-6:30P Youth</b> 6:30P BSA <b>No M&amp;O Mtg.-</b> <b>see Wed.</b>	2 9A-12:30P CC  10A-12P Li- brary Workers <b>7P M&amp;O Mtg.</b>	3 9A-12:30P CC <b>11:45A M&amp;M's</b>  6P Bells 7P Tai Chi 7:30P Choir	4  7:30P PNWCF	5
		<b>Friends of Youth:</b> 6P Fri-9A Sat 6P Sat-9A Sun				
6 <b>Daylight Saving</b> <b>Time ends</b>  6-8P BSA Par- ent Mtg.	7 9A TOPS  12P Bible Study  7P Rte. 66	8 9A-12:30P CC  <b>4-6:30P Youth</b> 6:30P BSA <b>7P Trustees</b> 7P Investment	9 9A-12:30P CC  10A-12P Li- brary Workers	10 9A-12:30P CC  6P Bells 7P Tai Chi 7:30P Choir	11 <b>Veteran's Day</b> 7:30P PNWCF	12
<b>Friends of Youth:</b> 6P Fri-9A Sat 6P Sat-9A Sun						
13 Dedication Sun- day  4P Srvc @ Sun- rise Asst'd Liv- ing-Pat King	14 9A TOPS  12P Bible Study  <b>UMW Cross-            roads Meal</b> <b>UMW Board</b> 7P Rte. 66	15 9A-12:30P CC  <b>4-6:30P Youth</b> 6:30P BSA <b>7P Finance</b>	16 9A-12:30P CC  10A-12P Li- brary Workers	17 9A-12:30P CC  6P Bells 7P Tai Chi 7:30P Choir	18  7:30P PNWCF	19
<b>Friends of Youth:</b> 6P Fri-9A Sat 6P Sat-9A Sun						
20 <i>Birthdays</i> <b>Consecration</b> <b>Lunch/Prog.</b>  10:45A Srvc @ Crossroads Re- tirement-Jason Robarts  <b>Sock Drive</b>	21 9A TOPS <b>Keys Deadline</b>  12P Bible Study  7P Rte. 66 <b>7P SPR Mtg.</b>	22 9A-12:30P CC  <b>4-6:30P Youth</b> 6:30P BSA	23 9A-12:30P CC  10A-12P Li- brary Workers	24  <div style="background-color: #d2b48c; padding: 5px; text-align: center;"><b>Thanksgiving Holiday—</b> <b>Office Closed</b></div>	25 7:30P PNWCF	26
<b>Friends of Youth:</b> 6P Fri-9A Sat 6P Sat-9A Sun						
27 <b>1st Sunday of</b> <b>Advent</b>  <i>Offering— UM</i> <i>Student Day</i>  <b>3:30-8P Youth</b> <b>Outing</b>	28 9A TOPS  12P Bible Study  7P Rte. 66	29 9A-12:30P CC  <b>4-6:30P Youth</b> 6:30P BSA  <b>7P Church</b> <b>Council</b>	30 9A-12:30P CC  10A-12P Li- brary Workers	"When a heart is filled with gratitude, there is little room for such things as grudges, unforgiveness, hatred, envy, jealousy, greed and the like. A sense of gratitude does good for both the spiritual heart and the physical heart. Consider that many heart attacks may be precipitated by stress, wor- ry, pressure and anxiety. Let gratitude fill your heart." Quote from Bill Ellis, <i>The Newsletter</i> <i>Newsletter, Nov. 2005</i>		

## Staff Information & Volunteers

### Fellowship Families for November: Group A Leader, Jane Sessions

Families: **Reva & Roger Allington**, the **Beishlines**, **Carol Benedict**, **Patty Bowen**, **Darlene Bowerman**, the **Chans**, **Kathy Kinch**, **Terry Patrick**, the **Rubles**, **Jackie Tauble**.

Fellowship Family group lists and current calendars for Sunday planning are on the bulletin board on the inside kitchen door.

**Special Sundays in November**  
*Consecration Sunday Potluck, Nov. 20th*  
*Birthday Sunday, Nov. 20th*

### ***We Love Our Volunteers!!***

#### LITURGISTS:

Nov. 6	Dick Clark
Nov. 13	John Fountain
Nov. 20	Vasantha Daniel
Nov. 27	Roger Allington



#### USHERS:

Nov. 6	Diana Wilson & John Mahoney
Nov. 13	Lou Schwind & Jane Sessions
Nov. 20	Jennifer Wood & Scott Callihan
Nov. 27	Patty Bowen & Ed Peterson

*Joe Ann Rucker, Worship and Arts Chair, coordinates our Liturgists and Ushers. If you are unable to be at church on the day you've volunteered, please call Joe Ann at 425-373-4546.*

## Worship Schedule:

**Communion Service: 8:30-9 a.m.    Worship: 10:30 a.m.**

## OUR STAFF & VOLUNTEERS

**Ministers:** Congregation

**Pastor:** Thomas G. Steffen (tgsteffen@gmail.com)

**Church Admin. Asst.:** Sue Wiseman (stpeters1@msn.com)

**Interim Choir Director:** Scott Barker

**Organist:** Nichole Basile

**Substitute Pianist/Organist:** Rich Rucker

**Carillons Directors:** Scott Barker

**Director of Child Care Center:** Jane Sessions (email: jane-sessions@hotmail.com)

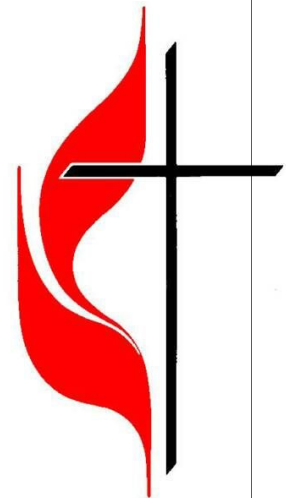
**Child Care Reservations Line:** 425-443-5897

**Volunteer Youth Leaders:** Jennifer Wood & Scott Callihan

**Sunday Nursery Care provided by:** Jennifer Swanson

**Janitorial Team:** Teresa and Oscar Avalos

**Groundskeeper:** Craig Miller



All KEYS articles must be submitted by **Monday, November 20th** for the **December** newsletter.

The Keys is posted to the website each month.

If you would prefer the Keys mailed to your home, please call the church office to arrange for postage.

**St. Peter's United Methodist Church**

**17222 NE 8th Street, Bellevue, WA 98008**

**Church: 425-747-3210 Fax: 425-747-3789**

**Website: [www.stpetersumc.net](http://www.stpetersumc.net)—the website calendar is updated each Friday.**